

1

Eastbound Closure at I-5 Interchange

For the latest info on closures:
www.keepusmoving.info

Target Closure Dates:
– May 19 - 26
– 8 days

Suggested Alternate Routes:

- I-5 South to Exit 191
- Centennial Blvd.
- Harlow Rd.
- Franklin Blvd.
- Beltline-Gateway- Pioneer Pkwy.

How Traffic Will Be Affected:

I-105 East toward Springfield from downtown Eugene

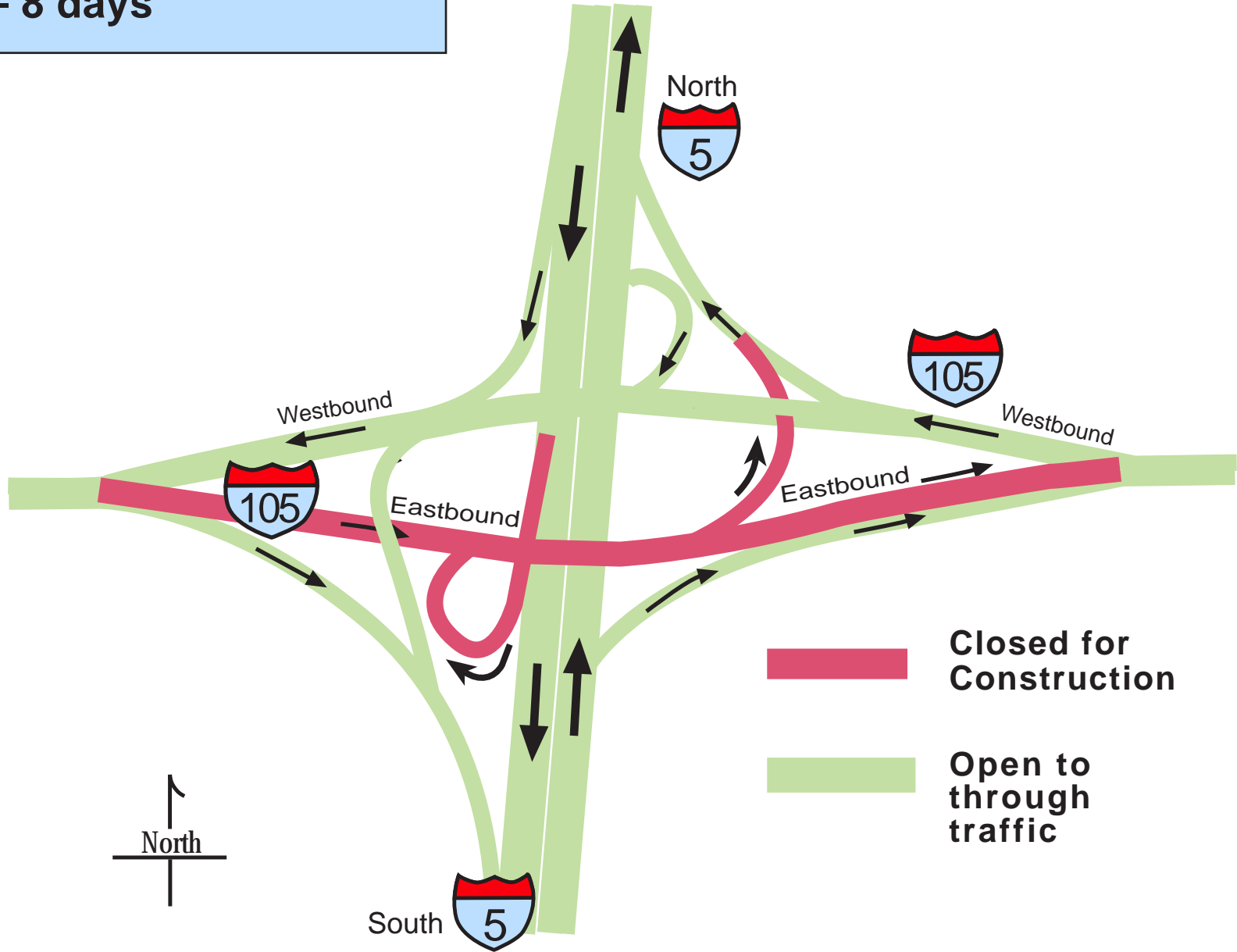
- * Eastbound traffic on I-105 will not be able to merge north onto I-5 toward Portland
- * Eastbound traffic headed toward Springfield on I-105 will not be able to drive the I-5 overpass into Springfield
- * Eastbound traffic will be routed via Roseburg exit/ Southbound I-5. Traffic can take Exit 191 (Glenwood), cross the freeway, and enter Northbound I-5.
- * Both lanes of westbound travel will be open, but will experience delay

From Springfield (Hwy 126/I-5 interchange - near Gateway)

- * West, south, and northbound traffic will be able to use all facilities

From I-5 (north-south)

- * Southbound traffic on I-5 will not be able to take the eastbound Springfield exit at I-105/Hwy 126. Continue south to Exit 191.
- * Southbound traffic on I-5 will be able to take the westbound Eugene exit at I-105
- * Northbound traffic on I-5 will be able to take the eastbound Springfield exit at I-105/Hwy 126 and westbound exit
- * All lanes of both north and southbound I-5 will be open, but expect increased congestion



Eugene

* ODOT and the contractor work closely to best estimate the dates that closures will happen, however, due to the nature of construction, these dates may change depending on factors such as weather and construction delay. The most current information on I-105 closures will be posted on the website on a weekly basis. Please check back regularly.